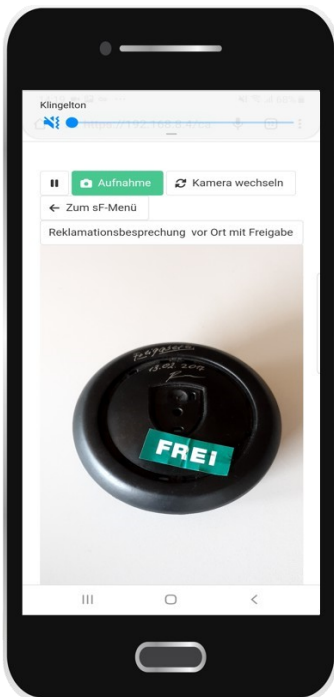
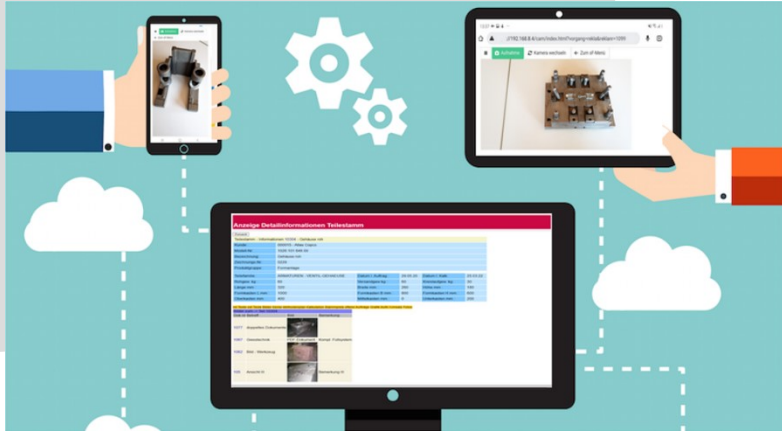


Webinfo – Information at a glance



The benefit

It is often not always easy to clearly display data in your system. **WebInfo** solves this problem and gives you new insights into your data. **WebInfo** allows quick and easy access to the information in your company that is required on a daily basis to control operational processes and improve communication with customers and suppliers.

WebInfo supports you in increasing your efficiency and bringing transparency to operational processes. The intuitive operation of **WebInfo** makes your employees productive immediately and opens access to company information where it is needed on a daily basis. The appearance of **WebInfo** can be freely adjusted according to your specifications.

Displays and evaluations are not permanently programmed, but are controlled via configuration files. The user can create his own evaluations or derive them from the existing configurations. If you have any questions, we are of course at your disposal.

The functional addon **CamApp** lets you upload photos directly from your smartphone to the connected database. An absolute must for all areas of QM, production and logistics.

WebInfo runs on the web on every browser and end device. Even without direct access to the ERP system, WebInfo can combine all information from the calculation to delivery from different sources and display it clearly at any time.

Use all the benefits now
and improve your overview!

info@rguexpert.de www.rguexpert.de

RGU expert

RGU Expert GmbH
Schweinfurter Str. 28
97076 Würzburg
Tel.: +49 931 309800

Die Grundlagen

With the following example we will give you a first impression of the flexibility and power of the **WebInfo** tool. **WebInfo** allows you to view your business from different perspectives, e.g. items, customers, suppliers, orders, purchase orders and production. There is a method to this: All key terms are used as links to further information. This is how the networking of information in the company is mapped - queries and research become as easy as surfing.

Using the example of the article master, the possible applications can be shown as an example. The article master area allows access to important information of the product description. The individual functions can be selected via a menu. In this example, the function for internal texts is selected. Further details, e.g. on further texts, images, work plans, calculations, master prices or open orders (also in graphic representation) are available. The item numbers of the positions can be selected and then branch to the respective details for the parts master.

URL: http://192.168.1.1/stg/leq/cg/v5FWWW/Prog=FSX/WW/Title=FSX900/KeyItem=Dt10_t0keyval=10304/Box Go Refresh Home Open Options Back Forward History

Anzeige Teilstammdaten zu Teile: 10304

Teilstamm - Informationen 10304 - Gehäuse roh

Kunde :	000015 - Atlas Copco				
Modell-Nr.:	1026 101 648.00				
Bezeichnung:	Gehäuse roh				
Zeichnungs-Nr.:	0229				
Produktgruppe:	Formanlage				
Teilfamilie:	ARMATUREN - VENTIL-GEHAEUSE	Datum I. Auftrag :	04.09.18	Datum I. Kalk.:	08.07.19
Rohgew. kg :	60	Versandgew. kg :	60	Kreislaufgew. kg :	30
Länge mm :	320	Breite mm :	260	Höhe mm :	180
Formkasten L mm :	1000	Formkasten B mm :	800	Formkasten H mm :	600
Oberkasten mm :	400	Mittelkasten mm :	0	Unterkasten mm :	200

Int. Texte ext. Texte Bilder Kerne Methodenplan Kalkulation Stammpreis offene Aufträge Grafik Auftr./Umsatz

Interne Texte zum Teil 10304

RDN: Text

- 1 - Dieses Teil umfasst alle möglichen Mepf-Strukturen.
- 2 - Artikelstruktur
- 3 - Kernstruktur
- 4 - Verpackungsstruktur
- 5

WebInfo is designed in such a way that you can determine the layout, appearance and, above all, the information used. The examples listed here, and more, are available in the standard version.

Orders/ revenue

Open and all orders can be displayed and listed. Filter functions can also be used for the selected areas. The order backlog is based on the items selected in the ERP system.

Infosystem

URL: Go Refresh Home Open Options Back Forward History

Teilestamm - Informationen 10304 - Gehäuse roh

Kunde : 000015 - Atlas Copco
 Modell-Nr. : 1026 101 648.00
 Bezeichnung: Gehäuse roh
 Zeichnungs-Nr.: 0229
 Produktgruppe: Formanlage

Teilefamilie: ARMATUREN - VENTIL-GEHAEUSE Datum I. Auftrag : 04.09.18 Datum I. Kalk: 08.07.19
 Rohgew. kg : 60 Versandgew kg : 60 Kreislaufgew. kg : 30
 Länge mm : 320 Breite mm : 260 Höhe mm : 180
 Formkasten L mm : 1000 Formkasten B mm : 800 Formkasten H mm : 600
 Oberkasten mm : 400 Mittelkasten mm : 0 Unterkasten mm : 200

mit Texten mit Texten Bilder Kerne Methodenplan Kalkulation Stammpreis offene Aufträge Grafik Auftr./Umsatz

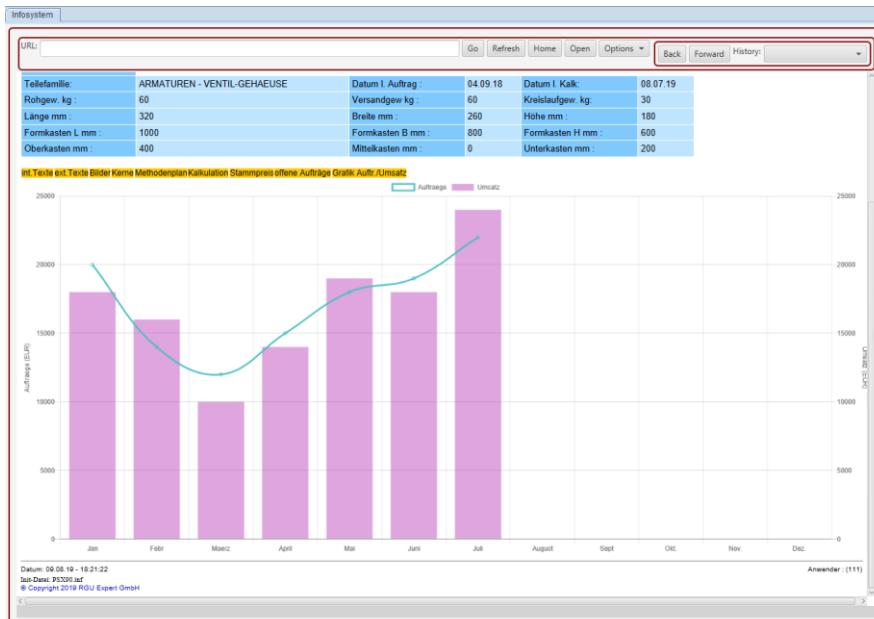
Zeige 30 Einträge

Auftrags-Nr.	KundKW	Term-Regel	Lieferterm	best.Menge	gel. Menge	ber. Menge	RestMenge	StckPreis	Pos.Preis
1101.01	Atlas Copco	1.1	200804	10	0	0	10	7,82	78,16
20999.01	Atlas Copco	1	200234	12	0	0	12	24,16	289,92
61866.01	CAT USA	1.1	200302	15	0	0	15	0,00	0
61877.01	Atlas Copco	1	201850	10580	20	0	10560	173,00	1826880
61905.01	Atlas Copco	1	201018	100	0	0	100	136,00	13600
62346.01	Atlas Copco	1	200244	120	0	0	120	0,00	0
62347.01	Atlas Copco	1	200440	120	0	0	120	30,59	3670,8
62349.01	Atlas Copco	1	200308	456	0	0	456	0,00	0
62352.01	Atlas Copco	0	0	100	100	0	0	23,34	0
62354.01	Atlas Copco	0	0	200	0	0	200	0,00	0
Summe:								1844518 /	5214479

Ansicht 1 bis 10 von 29 Einträgen (gefiltert von 67 Einträgen) zurück 1 2 3 vor

Datum: 08.08.19 - 18:00:00 Anwender: (111)
 Job-Dien: P3330.inf

The integration of business graphics is easily possible. There are a number of graphic templates such as bar, line, area, circle and mixed graphics. The display shows an example of the sales trend and incoming orders for the selected article in the current year. The chart can be operated interactively and additional information can be displayed when the user moves the mouse over the graphic.

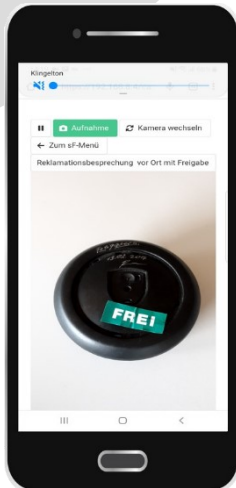


Functional addon: CamApp

The functional addon *CamApp* lets you upload photos directly from your smartphone to the connected database. An absolute must for all areas of QM, production and logistics.

Mobil

CamApp is specially designed for your smartphone. Use your smart phone camera to quickly take and assign photos from goods receipt, quality control or production.



Integrated into *WebInfo*, the *CamApp* is available on any end device in the browser.

Just take a photo and upload it. The photo is automatically assigned to where you need it again later.