

# *structura* – Enterprise Management System



**Your ERP/MES  
management  
system for your  
company**

RGU Expert GmbH  
Schweinfurter Str. 28  
97076 Wuerzburg  
Germany  
Tel.: +49 931 309800  
Fax.: +49 931 3098022  
[info@rguexpert.de](mailto:info@rguexpert.de)  
[www.rguexpert.de](http://www.rguexpert.de)

## structura

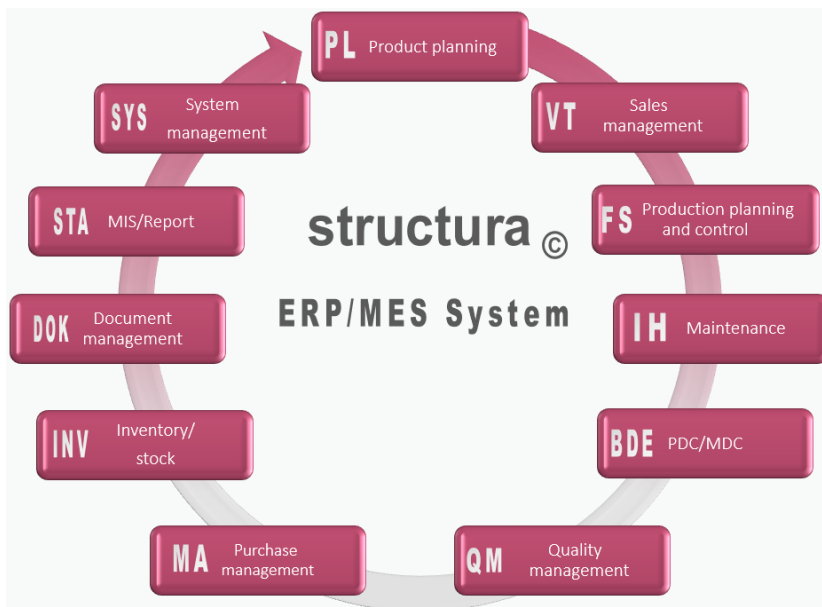
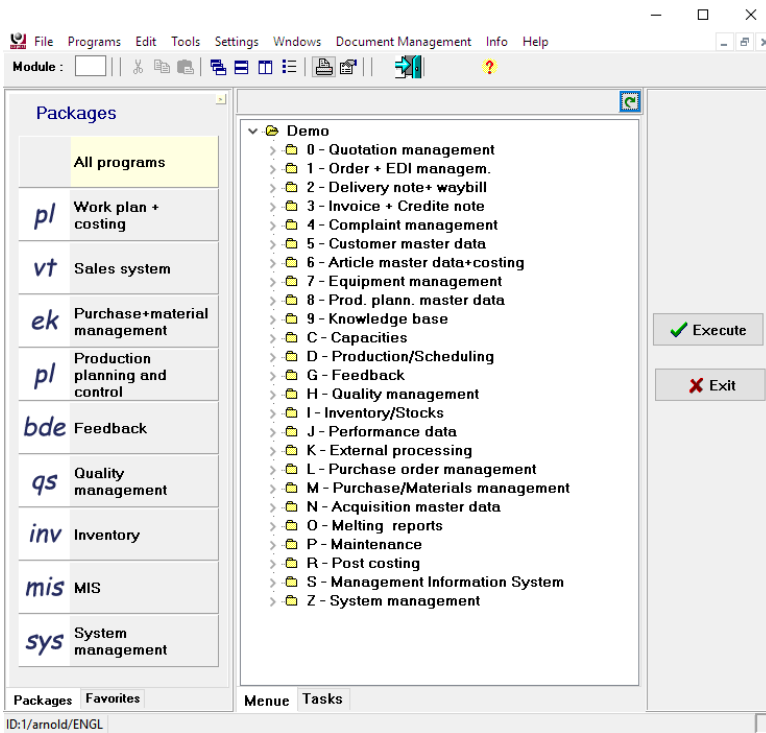
**structura** is modern software system for companies, representing all courses of business transaction starting from purchase management via production planning and control and quality management up to sales management with dispatch handling.

**structura** can be used as an individual on-site system as well as in cooperation over several locations.

**structura** is modularly designed, which allows for an application oriented usage designed for your individual requirements.

**structura** can be used in different languages depending on the user and manages your customer's languages and currency.

**structura** incorporates a sophisticated Management Information System for using online and offline, be it simple reports or full dashboard data analysis centre.



TIME TO THINK  
ABOUT  
SUCCESS

## structura

Product planning deals with the classification and description of your products with all relevant characteristics regarding your production process, your costing calculation and your sales data. This data will be used with **structura** for your benefit. Our software module for planning and costing deals with the data management for these tasks:

Management of data for products and consumption materials, machines, work places and work steps.

Management of pattern and equipment and production plans.

High degree of automated process for the creation of production plans and BOM using calculation formulas.

Pattern and equipment management with life cycle time monitoring.

Management of assembly production.

Complete overview of your customers, products, product groups and many more.

Management of additional information for your production using texts and pictures.

## Product planning

Detailed and ensured, according to the standard ISO 9000

### Pattern and equipment

Pattern and equipment management with life cycle time monitoring, inventory and transaction management

### Material management

Management of all materials for production as another layer to purchase materials (e.g. plastic injection casting) including costing

### Product planning

Standards and technical drawings  
Documents, pictures, videos, 3D data  
Multiple level variant configuration  
Process descriptions

### Production plan

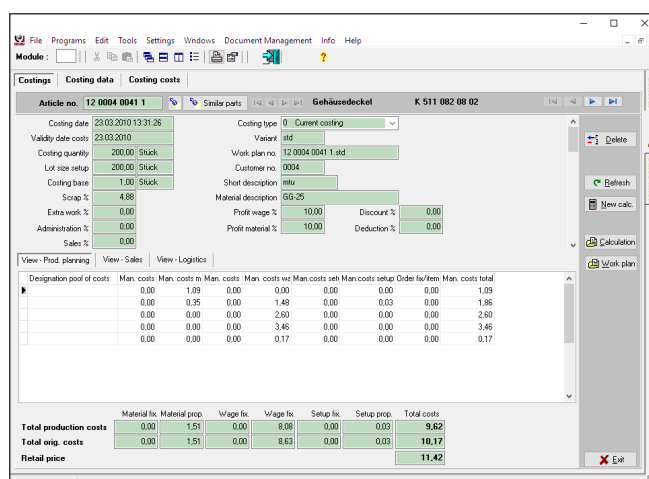
Integrated test plan and instruction  
Machining and external processing

### Costing calculation

Pre-costing and post-costing analysis  
Sorted by production steps and price types

### Reporting and evaluation

Sales order history  
Price history  
Revenue statistics  
etc.



Article no. 12 0004 0041 1		Costing type 0 Current costing	
Costing date	23.03.2010 13:31:26	Costing type	0 Current costing
Validly date costs	23.03.2010	Work plan no.	12 0004 0041 1.aid
Costing quantity	200.00 Stück	Customer no.	0004
Lot size setup	200.00 Stück	Short description	mtu
Costing base	1.00 Stück	Material description	GB-25
Scrap %	4.88	Profit wage %	10.00
Extra work %	0.00	Discount %	0.00
Administration %	0.00	Profit material %	10.00
Sales %	0.00	Deduction %	0.00

Designation pool of costs	Man. costs	Man. costs re	Man. costs	Man. costs we	Man. costs sel	Man. costs setup	Order fix/Item	Man. costs total
	0.00	1.09	0.00	0.00	0.00	0.00	0.00	1.09
	0.00	0.35	0.00	1.48	0.00	0.03	0.00	1.86
	0.00	0.00	0.00	2.50	0.00	0.00	0.00	2.50
	0.00	0.00	0.00	3.46	0.00	0.00	0.00	3.46
	0.00	0.00	0.00	0.17	0.00	0.00	0.00	0.17

	Material fix	Material prep.	Wage fix	Wage fix	Setup fix	Setup prep.	Total costs
Total production costs	0.00	1.51	0.00	8.63	0.00	0.03	10.17
Total org. costs	0.00	1.51	0.00	8.63	0.00	0.03	10.17
Retail price							11.42

TIME TO THINK  
ABOUT  
SUCCESS

# Inquiries – Costing - Quotation

Simple, easy and effective

## Inquiry management

Address data  
Customer data with terms  
Product data for quotation  
Reports for quotation and costing

## Quotation costing

Reports for open inquiries  
Design and process specifics  
Calculation of process times  
Scale quantity calculation

## Writing quotations

Reports for open quotations  
Linking to costing process  
Price structure for scaled quantities  
E-mail connection

## Tracking quotations

Resubmission dates  
Quotation process monitoring  
Statistics for successful and failed quotations

## Workflow support

**structura** supports you with workflows starting with the newly entered inquiry up to the realization of the quotation. Connections to external CRM systems can be configured.

## structura

Quick and efficient processing of quotations is key for every business. The **structura** module for quotations supports you with the following features:

- Quick writing of quotations by connecting the costing result, reducing time for pricing
- Entering of minimal customer data for quotations
- Flexible quotation forms in the customer's language
- Reporting of quotations for success and failure or competitor
- Reporting for success rate

All costing data is based on your production plans and BOM. All costs can be saved with validity dates in a cost history. Every costing result is saved for future analysis of price development.

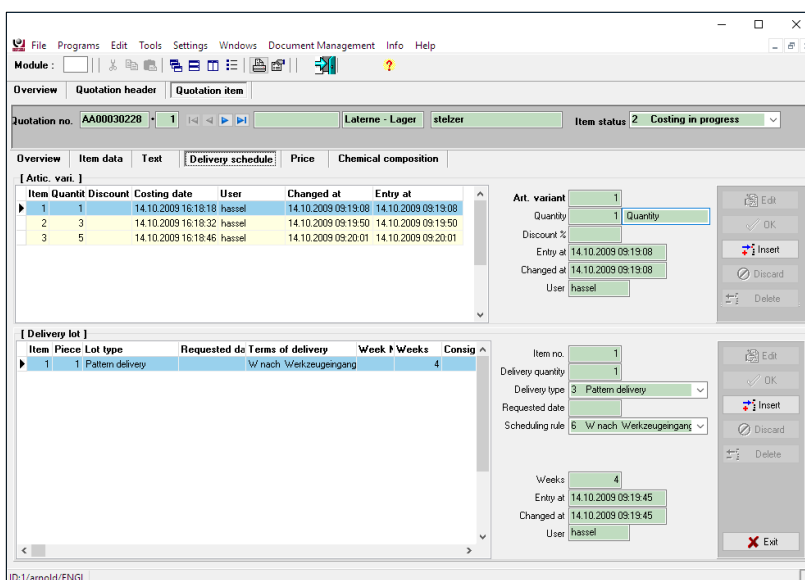
Every costing can be divided into:

- Production costs for the production manager
- Cost centre view for controller
- Prices for the sales department

All costing even includes your expected reject percentage.

**structura** incorporates your process cost calculation, which is of special interest since your unique costing template can be used.

- Pre-costing and post-costing
- Bill of material costing



The screenshot displays the 'structura' software interface. At the top, there's a menu bar with 'File', 'Programs', 'Edit', 'Tools', 'Settings', 'Windows', 'Document Management', 'Info', and 'Help'. Below the menu bar, there's a 'Module' dropdown and a toolbar with various icons. The main window is divided into several sections. The top section shows 'Quotation no. AA00030228' and 'Item status 2 Costing in progress'. Below this, there's a 'Quotation header' and 'Quotation item' section. The 'Quotation item' section contains a table with columns: Item, Quant, Discount, Costing date, User, Changed at, and Entry at. The table has three rows of data. To the right of the table, there's a 'Delivery schedule' section with fields for 'Art. variant', 'Quantity', 'Discount %', 'Entry at', 'Changed at', and 'User'. Below the 'Delivery schedule' section, there's a 'Delivery lot' section with fields for 'Item no.', 'Delivery quantity', 'Delivery type', 'Requested date', 'Scheduling rule', 'Weeks', 'Entry at', 'Changed at', and 'User'. The bottom of the window shows a status bar with 'ID:1/arnold/ENGL'.

TIME TO THINK  
ABOUT  
SUCCESS

## structura

**structura** supports you in your sales business. All sales orders are connected to your quotations and production scheduling. **structura** offers you integrated features for efficient sales order processing and monitoring.

Management of all customer data, sales people, customer contacts, prices.

Sophisticated price structure management including material and energy surcharge calculation.

Price and price structure changes in one step for customers. Consistent display of your contribution margin.

Management of trade orders with connection to supplier prices.

Reporting for incoming orders sorted by time, product groups, customer etc.

Intercompany-communication using EDI connection (VDA, EDIFACT standard).

Material resource planning over multi-layered production plans.

Connection of sales orders to production planning and scheduling without the need to enter duplicate data.

## Sales order management

Sophisticated, customer-oriented, detailed

### Customer data

Customer data with contact, multiple addresses

Price management and adjustment

### Sales orders

Individual orders, call-off schedules, frame-work contracts

Allocate to invoice and delivery addresses

Credit assessment

Pricing including scaled quantities

Multi-level price structure

Sales order costing

### Delivery schedules

EDI interface for delivery and call-off schedules

Checking of incoming call-off

Checking of data correctness

Adjustment of production quantity

### Check of sales orders and approval

Quality requirements

Comparing of delivery dates to production dates

### Production

Management of external processors

Order production

Material resource planning for demand and stock-driven articles

### Order confirmation and tracking

Order confirmation by e-mail

Reports of incoming orders

Reports of ongoing orders

Schedule overview

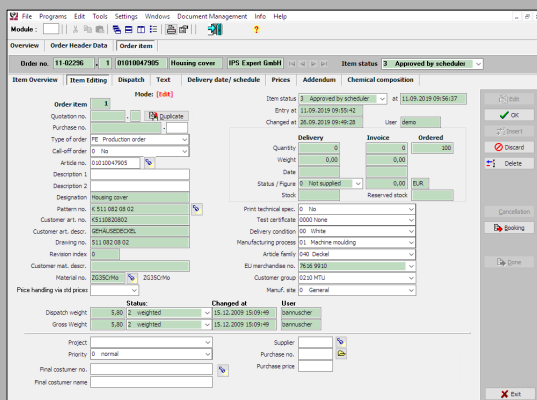
Statistics for comparing sales orders over time

Production progress

Delivery progress

### Intercompany-communication

Integration of company wide features using EDI standard EDIFACT



# Dispatch and invoicing

Precise and fast

## Stock and delivery schedule

Connection of current stock and your delivery schedule

## Dispatch preparation

Automatic writing of delivery notes  
Labels for pallets, lattice boxes

## Packaging materials

Packaging materials as purchases  
Stock management  
Empties management

## Delivery notes

Waybill creation  
EDI delivery  
Dispatch forms  
EDI Interfaces

## Invoicing

Sophisticated price structure  
Automatic calculations of dispatch weight  
Interface to Finances & Accounting System

## Credit notes

Including material rebooking  
Product groups, orders, invoices credits  
Interface to Finances & Accounting System

## Reports

Revenue reports of sectors, customers etc.  
Commission settlement  
Revenue statistics  
Weekly dispatch overview

## *structura*

Use *structura* to make your delivery scheduling easier.

- Delivery date overview
- Detailed delivery date prediction due to integrated scheduling
- Packaging management with weight and empties management
- Management of packaging labels
- Waybill creation and management
- Delivery notes for external processing
- Using of external and consignment warehouses
- Transport company orders for improved transport management
- Freight lists
- EDI support for sending delivery notifications directly to your customer

*structura* connects your quotations, sales orders, delivery notes and invoices for your improved business processes.

Further features are:

- Management of multiple addresses
- Invoice monitoring
- Displaying your revenue, produced articles, covering margins, average prices
- Data transfer for invoice and credit notes to Finance and accounting systems

TIME TO THINK  
ABOUT  
SUCCESS



## structura

Benefit from our possibilities regarding all things related to your material management needs. We combine customer demands with your production and your purchase requirements.

We cover your bases:

- Material master data, scheduling and stock data
- Comparing demands and resources for easy MRP runs
- Creating production and purchase order proposals
- Stock management for individual or multiple inventories
- Consumption material management for production
- Return material management
- Stock taking including prices for production and average prices
- Retrograde material withdrawal (backflushing) for improved stock overview
- Intensive reporting regarding all material transaction and consumption

# MRP and purchase management

Integrated, accessible, efficient

## Stock management

Shop floor stock management  
External warehouses  
Warehouse transfers

## Availability checks

Demands arising from sales and production orders  
Demands covered by production and purchases  
Demand and stock-driven materials  
Checking availability during purchase period

## MRP

Creating production orders and lots  
Creating purchase orders  
Creating purchase proposals

## Production logistics

Sales order individual production  
Individual production with production lots  
Call-off order with delivery schedule  
Calculation of demands using your bill of materials

## Stock taking

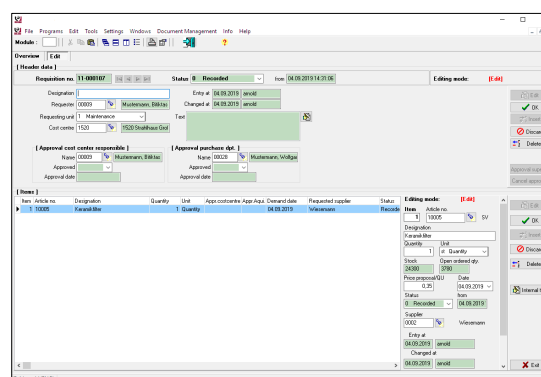
Stock taking for specified inventories  
Shop floor stock taking  
External and consignment inventories

## Reports and analysis

Material transactions  
Material stock overview

## Purchase order management

Supplier prices  
Purchase requisition with multiple levels of approval  
Purchase order tracking  
Incoming goods management  
Purchases of services and material



TIME TO THINK  
ABOUT  
SUCCESS

# Purchases and incoming goods

Comprehensive, quick, up-to-date

## Your data management requirement

Supplier data and contacts  
Purchase article data with article classification  
Addresses and prices  
Article to supplier connection

## Purchase requisitions

Production demand  
Stock demand  
Multi level check for approval  
Transformation into purchase orders

## Purchase orders

Delivery schedules  
Dunning  
Supplier inquiries

## Incoming goods

Incoming goods management  
Return material management  
Connected to purchases  
Automatic stock booking

## Incoming invoices/AP invoices

Create invoices with connection to purchase orders  
Allocate incoming invoices to accounts  
Interface to Finance & Accounting System

## Reports and analysis

Purchase statistics  
Material transactions  
Price development over time  
Overview of ordered quantity

## *structura*

All requirements of your purchase department in one system, from purchase requisition to purchase orders. Keep up-to-date with supplier price development and choose accordingly.

- Manage suppliers and prices
- Use the current retail price for each supplier to make the right purchase choice
- Keep up with price development
- Manage contacts
- Inquiry management connected with your purchase order management
- Delivery schedule management
- Checking of AP invoices and interface to Finance and Accounting systems
- Manage multiple languages and currencies of your suppliers

Support your business process with workflows for easier office communication.

TIME TO THINK  
ABOUT  
SUCCESS



## structura

The correct and efficient planning and control of production is a challenge of its own. Additional requirements like quality, delivery dates and costs, just add to the challenge. Let **structura** help you in guiding your production planning:

- Capacity overview of your production with finite capacities
- Connecting sales order requirements with production orders
- Production date monitoring with progress
- Pattern and equipment management, life cycle monitoring
- Scheduling on daily or shift basis for bottle-neck machinery including scheduling of mixed frames. Graphical scheduling tool
- Production data feedback including rejects
- Production statistics comparing targeted and actual needed production time

## Production planning and control

Efficient, accessible, comprehensive

### Various production order types

Sales order production  
Demand and stock-driven production  
Production lot division support  
Extra production for rejects and re-works

### Production time management

Finite capacities and shift planning  
Different capacity calendar for different machines and stations  
Scheduling models by production process  
Capacity and utilization overview

### Plan your quality

Test plans for all products and materials  
Special test instructions and descriptions  
Test result capturing

### Production time and quantity

Consumption material calculation  
Time allocation of finite capacity  
Register material needs

### Production order processing and control

Sequence planning for bottle-neck machines/stations  
Creation of mixed frames  
Weekly scheduling  
Daily scheduling  
Resource planning for bottle-neck resources  
Multi-layered production orders  
Production data feedback

### Production documents

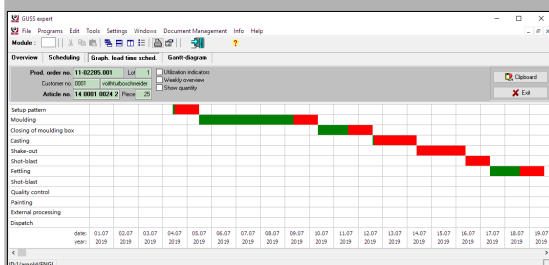
Accompanying work documents  
Barcode support for production data feedback  
Display of necessary information online

### External processing

Delivery note management  
Stock at external warehouses  
Stock taking  
Incoming goods from external processors

### Reports and analysis

Production progress  
Production lot overview



# Production data capturing PDC

Detailed, precise, up-to-date

## Production data capturing possibilities

Manually on the PC  
Using barcodes (mobile data capturing)  
Using PDC hardware like industrial PCs  
Machine data capturing

## Feedback data

Production efficiency and time needed  
Overhead time costs  
Extra work time capturing

## Reject management

Allocate defect sources  
Production costs analysis

## External processing

External processor management  
Stock taking of external warehouses

## Reports and analysis

Used pattern and equipment  
Material consumption  
Reject reports  
Post costing analysis  
Production statistics

Task	Machine	Programs
Injection casting	ArburgH570	Feedback
Dispatch	Arburg320X	Rejects
		Documents
		Work list
		Interruption
Discard	ArburgH570	Exit

## structura

**structura** lets you capture your production data the way you need it. Capturing data can be done in an office or directly on the shop floor level where the data arises.

Production data can be allocated connected to production orders or to individual products and is always connected to your machines or work stations.

Production data is used to:

- Relieve capacity
- Production progress monitoring
- Shop floor stock management
- Basis for your post-costing analysis

## Material consumption

Connect your production data feedback directly to your material consumption

## Rejects

Capture reject data where it is discovered. With automatic stock management connection.

## Production progress

Stay up-to-date with your production progress. Feedback for every work step shows the still unfinished and finished amount of products.

TIME TO THINK  
ABOUT  
SUCCESS

## structura

Unwanted but avoidable machine break-down costs production time and money. With the **structura** all machines like cranes, transport vehicles or machining equipment can be checked upon periodically and the risk of break-down be minimized.

- Periodic reminder of upcoming maintenance work (Predictive maintenance management)
- Tree-structure of machines and components
- Individual maintenance plans, counters and counter levels for machines or equipment
- Shift capacity of machine and maintenance crew
- Graphical scheduling tool for automatic and manual scheduling
- Connection to document data base
- Production statistics comparing targeted and actual needed production time

## Maintenance management

Predictive, comprehensive, easy

### Predictive maintenance

Reminder of upcoming maintenance issues  
Based on time or consumption intervals  
All machines and equipment

### Detailed structure

All machines described with components in a tree-structure  
Different intervals for different components  
Individual maintenance plans for individual components

### Plan your maintenance

Individual maintenance plans  
Ad-hoc maintenance plan for immediate usage in case of machine failure  
Shift work times for machines and maintenance crew  
Graphical maintenance order calendar

### Maintenance work feedback

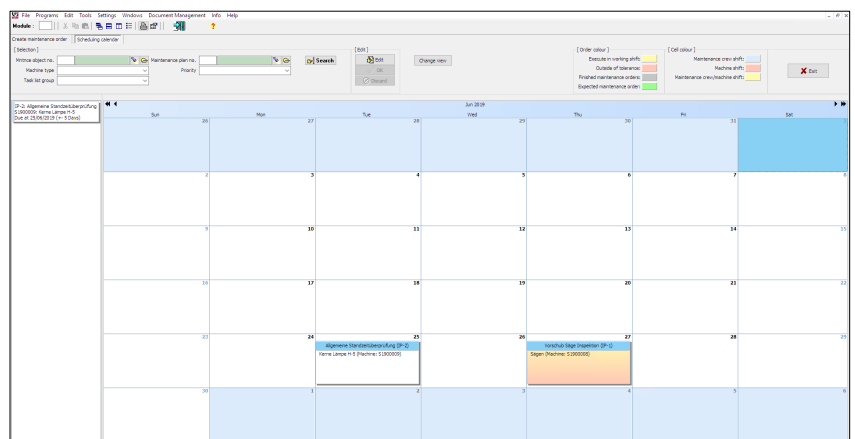
Feedback data for time needed and people involved  
Feedback data for used consumption material  
Correction of counter values

### Maintenance documents

Document data base available for each maintenance component  
Technical drawings, explosion drawings, pictures etc.

### Reports and analysis

Creating individual reports using the **Report Designer**  
Materials needed  
Comparison of target time and actual time needed



TIME TO THINK  
ABOUT  
SUCCESS

# Management information system

Tools for data analysis and display

## Business data management

Connect to any SQL capable data base

Reuse once set search parameters

Operation of tools without the need for programming

Ideal for big data analysis

## Data analysis

Quick and detailed data analysis

Interactive operation via Drag&Drop

Saving of individual views

## Data display

Display data lists

Display data as tables

Display data as graphics

## Data analysis tools

Report Designer & Generator

Report Cube

Dashboard

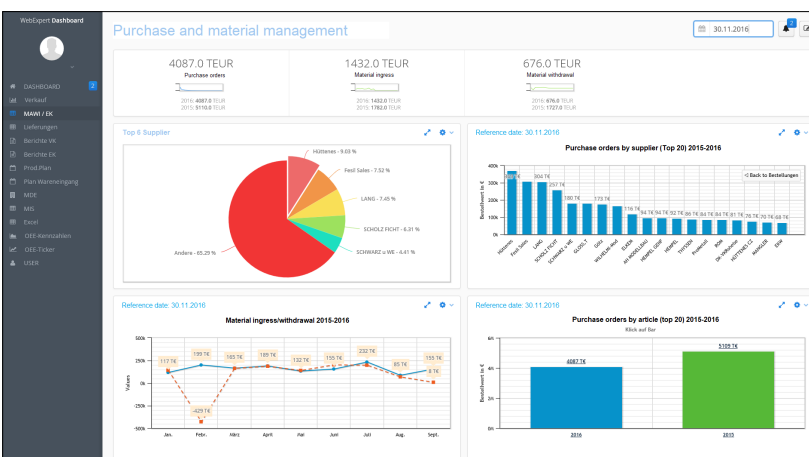
## Dashboard

Pre-defined, standardized data analysis

Ideal to keep track of your daily routines

Available online in your company network, browser-based

Graphical data display for an easier data overview



## structura

Use **structura** to keep up-to-date with all of your business process data. Use it to communicate your development and analyse your potential. Use it to make quick and informed business decisions. The very own data analysis tool of **structura** can be connected to any SQL capable data base.

Free data access

Simple operation via Drag&Drop

Multi-level analysis

Multi-level communication possibilities

Display complex data quick

Use graphics, tables and pictures

High degree of automatization

Show your customers your prepared data

Be able to create your own reports using the **Report Designer**

Analyse big data quick and easy with the **Report Cube**

The **Dashboard** supports you in an ideal fashion using pre-defined data evaluation sheets to give you an efficient overview of your daily routines.

TIME TO THINK  
ABOUT  
SUCCESS

A blurred background image showing a laptop screen with a website interface and a white coffee cup on a wooden surface.

**RGU Expert GmbH  
Schweinfurter Str. 28  
97076 Wuerzburg  
Germany**

**Tel.: +49 931 309800  
Fax: +49 931 3098022**

**[info@rguexpert.de](mailto:info@rguexpert.de)  
[www.rguexpert.de](http://www.rguexpert.de)**