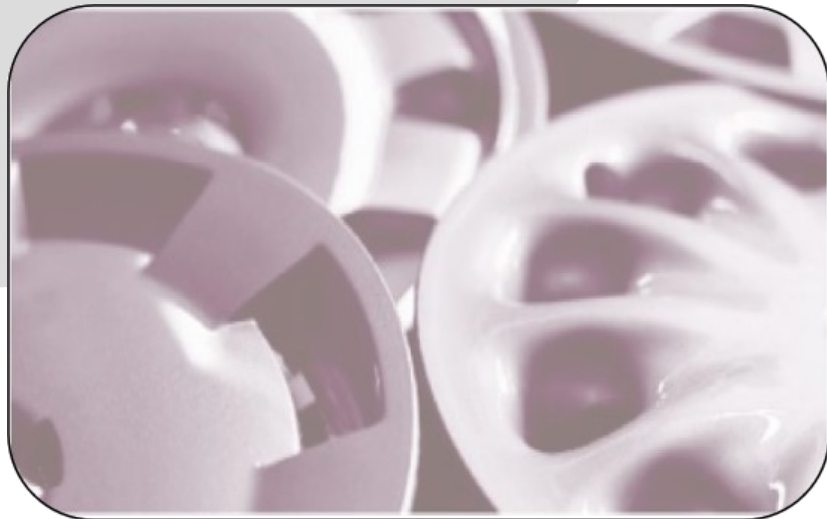


# structura PLASTIC ERP



**structura** is modern software system for companies, representing all courses of business transaction starting from purchase management via production planning and control and quality management up to sales management with dispatch handling.

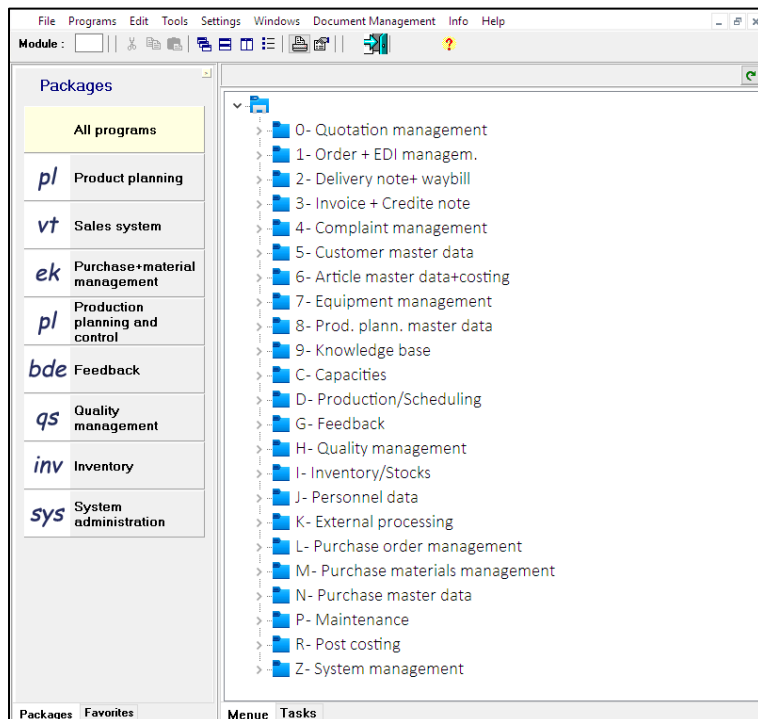
**structura** can be used as an individual on-site system as well as in cooperation over several locations.

**structura** is modularly designed, which allows for an application-oriented usage designed for your individual requirements.

**structura** can be used in different languages depending on the user and manages your customer's languages and currency.

**structura** incorporates a sophisticated Management Information System for using online and offline, be it simple reports or full dashboard data analysis centre.

**structura** offers additional systems regarding staff time management, access control, production data capturing and sophisticated reporting tools or EDI services.



**All from one supplier!**

Product planning deals with the classification and description of your products with all relevant characteristics regarding your production process, your costing calculation and your sales data. This data will be used with **structura** for your benefit. Our software module for planning and costing deals with the data management for these tasks:

- Management of data for products and consumption materials, machines, work places and work steps.
- Management of pattern and equipment and production plans.
- High degree of automated process for the creation of production plans and BOM using calculation formulas.
- Pattern and equipment management with life cycle time monitoring.
- Management of assembly production.
- Complete overview of your customers, products, product groups and many more.
- Management of additional information for your production using texts and pictures.

## Product planning

Detailed and ensured,  
according to the standard of ISO 9000

### Product planning

- ✓ Process descriptions
- ✓ Standards and technical drawings
- ✓ Documents, pictures, videos, 3D data
- ✓ Multiple level variant configuration

### Production plan

- ✓ Integrated test plan and instruction
- ✓ Machining and external processing

### Pattern and equipment

- ✓ Pattern and equipment management with life cycle time monitoring, inventory and transaction management

### Material management

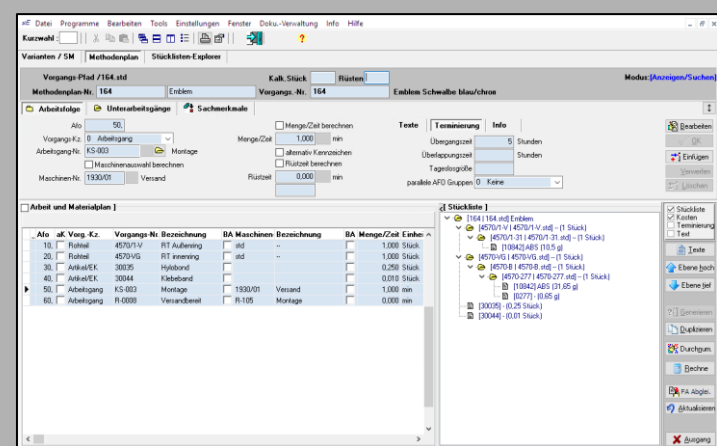
- ✓ Management of all materials for production as another layer to purchase materials (e.g., plastic injection casting) including costing

### Costing calculation

- ✓ Pre-costing and post-costing analysis
- ✓ Sorted by production steps and price types

### Reporting possibilities

- ✓ Sales order history
- ✓ Price history
- ✓ Revenue statistics
- ✓ And more



# Production planning and control (MES)

Efficient, accessible, comprehensive

## Order types

- ✓ Customer order manufacturing with automatic lot splitting for production orders
- ✓ Different production order types
- ✓ Scrap and rework lots

## Capacity planning

- ✓ Finite capacities, shift planning
- ✓ Shift calendar per capacity group
- ✓ Scheduling according to work plan
- ✓ Capacity utilization in scheduling

## Material requirement assessment

- ✓ Purchased materials and raw parts from parts lists
- ✓ Determination of time requirements from work plans (calculated automatically)

## Production order planning and control

- ✓ Rough scheduling and detailed planning
- ✓ Planning with orders or tool combinations
- ✓ Sequencing for important work processes
- ✓ Individual piece numbers possible
- ✓ Use of barcodes and worklists for feedback on orders and part numbers

## External processing

- ✓ Planned and unplanned external work
- ✓ With delivery note and goods receipt
- ✓ Orders and master prices
- ✓ Overview of external inventory

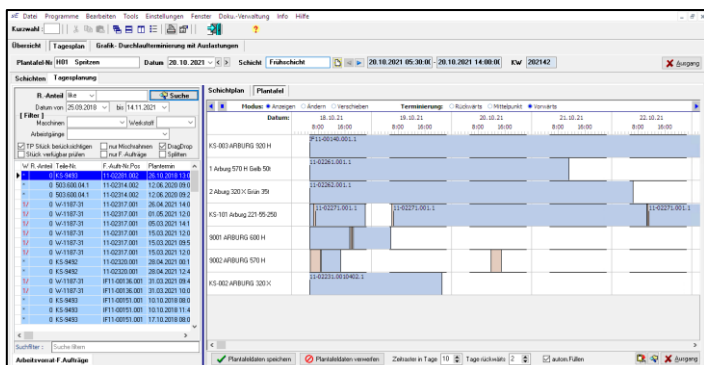
Planning production orders according to one's own possibilities, the available capacities and available raw materials, and this also across several production stages, is complex and requires a high degree of planning and production insight. **structura** gives you this production overview along with extensive options for planning and executing production orders. The structure of the system can be tailored to your needs.

The most important features for you at a glance:

- Finite capacities with capacity groups
- Relationship between customer orders and production orders and lots can be created directly
- Automatic scheduling based on article-specific work plans
- MRP run with BOM explosion for raw/finished parts systematics
- MRP run, demand and warehouse controlled in connection with purchased item quantities
- Individual part numbers possible to increase traceability and transparency in production
- Tracking of the production progress by feedback of orders or individual part numbers
- Deadline monitoring with the option of automatic rescheduling of backlogs
- Complete tool management (box, models, components) with tool life monitoring
- Creation of daily and shift schedules for bottleneck machines and the entire production
- combination of mixing plates, tools; Support by a graphic planning board
- Feedback for production times and quantities, rejects, disruptions

## Reporting possibilities:

- Manufacturing progress
- Lot overviews, order stocks
- Production statistics with a comparison of the plan/actual states for quantities and times
- Open orders
- Reject statistics, disruption statistics



Use **structura** optimally in sales management. Quotations, customer orders, product planning and materials management are linked. You have all the data you need up to date in the system.

The **structura** system is therefore your holistic point of contact for sales with advantages such as:

- Master data management for customers, representatives and contact persons, any number of delivery and billing addresses, master prices according to graduated quantities, including price development.
- Management of any number of price types such as basic price, mechanical processing and assembly or surcharges.
- Percentage changes in prices and price types for one or more customers and product groups are possible in batch processing.
- Consistent contribution margin calculation
- Processing of different order types
- Incoming orders according to periods with classification according to product groups, customers, families of parts, etc.
- Order overviews according to customers, delivery dates or materials with contribution margins.
- Management of simple customer orders or call-off orders in connection with EDI support
- Integration of company-wide features using EDI standard EDIFACT as intercompany-communication

Single and frame-work sales orders can be managed using the integrated MRP run, which is connected to the purchase article requirements due to the bill of material. Avoid overproduction and missing stock and have everything available at the right moment. The new delivery confirmation feature lets you realistically plan your production regarding available stock.

## Sales order management

Sophisticated, customer-oriented, detailed

### Sales orders

- ✓ Sales orders, call-off orders, framework orders, billing and delivery addresses automatically assigned
- ✓ Pricing through standard prices with graduated quantities
- ✓ Easily adopt complex price structures
- ✓ Individual order calculation possible

### EDIFACT

- ✓ EDI interface for delivery and call-off schedules
- ✓ Checking of incoming call-off
- ✓ Checking of data correctness
- ✓ Adjustment of production quantity

### Check of sales orders and approval

- ✓ Quality requirements
- ✓ Comparing of delivery dates to production dates

### Production

- ✓ Management of external processors
- ✓ Order production
- ✓ Material resource planning for demand and stock-driven article

### Order confirmation and tracking

- ✓ Order confirmation by e-mail
- ✓ Reports of incoming orders
- ✓ Reports of ongoing orders
- ✓ Schedule overview
- ✓ Statistics for comparing sales orders over time
- ✓ Production progress
- ✓ Delivery progress

### Master data

- ✓ Customer data, representative management, contacts, unlimited delivery and invoice addresses
- ✓ Management of standard prices and multiple customers for one article
- ✓ Revenue accounts, cost centres

## Inquiries, quotation, costing

Simple, easy and effective

### Inquiry management

- ✓ Customer data, conditions and addresses
- ✓ Product data for quotation
- ✓ Quotation and costing reports

### Quotation costing

- ✓ Overview of quotations to be calculated
- ✓ Incorporation of manufacturing processes and locations
- ✓ Production times and quantities can be determined with formula calculation
- ✓ Quantity variant calculation
- ✓ Full and partial cost calculation
- ✓ Customized price agreements
- ✓ Surcharges
- ✓ Formula calculation for volumes, surfaces

### Quotation management

- ✓ Complete overview of all quotation
- ✓ Adoption of the product data of similar inquiry items
- ✓ Price structures per graduated quantity
- ✓ Customer-specific conditions
- ✓ Print or email

### Reporting possibilities

- ✓ Overview of ongoing quotations
- ✓ Reporting by customer, agent, procedure
- ✓ Success statistics
- ✓ And more

### Workflow management

From receipt of the inquiry to the realization of the quotation, **structura** supports the processes in an automatic workflow.

Quick and efficient processing of quotations is key for every business. The **structura** module for quotations supports you with the following features:

Quick writing of quotations by connecting the costing result, reducing time for pricing

- Entering of minimal customer data for quotations
- Flexible quotation forms in the customer's language
- Reporting of quotations for success and failure or competitor
- Reporting of success rate

All costing data is based on your production plans and BOM. All costs can be saved with validity dates in a cost history. Every costing result is saved for future analysis of price development.

Every costing can be divided into:

- Production costs for the production manager
- Cost centre view for controller
- Prices for the sales department

All costing even includes your expected reject percentage.

**structura** incorporates your process cost calculation, which is of special interest since your unique costing template can be used.

- Pre-costing and post-costing
- Bill of material costing

In **structura**, quotations, orders, delivery notes and invoices are systematically linked so that all important steps work in harmony with each other and all the necessary information is available later. From order entry to invoicing, processing can be in the hands of one employee or can be organized on a division of labor basis.

With **structura**, dispatch management can offer the following advantages:

- Packaging instructions with calculation of the required material quantities for shipping, empties management
- Collective delivery notes, bills of lading, booking in batches
- Delivery notes for external processing, external and consignment stores
- Support of the transport control through the notification of requirements at the forwarding agent
- Transport documents by e-mail
- Intensive reporting options
  - Creation of loading lists
  - Overview of delivery commitments and more
- EDI connection possible

Invoice management offers you the following advantages:

- Billing addresses and delivery addresses can be separated
- Invoicing including graduated prices, surcharges for small quantities and inflation
- Credits and debits, pro forma and deposit invoices
- Book and close invoices in batch mode, send by e-mail
- Commission statement for representatives according to price types with and without cost-of-living surcharges
- Intensive reporting options
  - Daily and monthly cumulative sales aggregated by product groups
  - Display of turnover, tonnage, contribution margin, average prices
- Transfer of data from invoices and credit notes to financial accounting

## Dispatch and invoicing

Precise and fast

### Dispatch preparation

- ✓ Picking
- ✓ Create delivery notes
- ✓ Labels for pallet stickers, automatically issued depending on the number required

### Packaging management

- ✓ Inventory management of empties and packaging material
- ✓ Calculation of required quantities
- ✓ Management of incoming and outgoing empties

### Shipping documents

- ✓ Compiling of bill of lading
- ✓ Posting in the batch process possible
- ✓ Manage EDI shipping notifications, shipping notifications
- ✓ EDI connection usable

### Invoicing

- ✓ Automatically transferable price structure
- ✓ Automatic freight cost calculation
- ✓ Posting in the batch process possible
- ✓ Interface to the financial accounting system

### Credit notes

- ✓ Including bearing return
- ✓ Credit to product group, order, invoice

### Reporting possibilities

- ✓ Sales overviews by industry, customer, agent, etc.
- ✓ Commission settlement
- ✓ Sales statistics in period comparison
- ✓ Sales sheet per customer, industry, country, etc.
- ✓ Monitor delivery reliability and more

## Purchase management

Up-to-date, quick, comprehensive

### Purchase order management

- ✓ Purchase requisitions (BANF) for production
- ✓ Generation of inquiries and order proposals; Order Releases
- ✓ Different order types: material, services, external work, tools and equipment
- ✓ Print or email directly

### Incoming goods and goods withdrawal

- ✓ Goods receipt for purchased items, tools and services
- ✓ Goods receipt with complaint quantity and reason, delivery batch information, warehouse booking

### Incoming invoices

- ✓ Generate incoming invoice directly from material receipts or orders
- ✓ Interface to the financial accounting system

### Master data

- ✓ Extensive list of purchased items and suppliers with addresses and contacts
- ✓ Supplier prices, framework agreements
- ✓ Item to supplier reference

### Reporting possibilities

- ✓ Order tracking with appointment overviews
- ✓ Purchase statistics
- ✓ Material movement
- ✓ Price development
- ✓ Supplier loyalty report, dunning lists
- ✓ Overview of order stock
- ✓ Supplier evaluation with soft criteria

Ideally, orders and order proposals come directly from the planning department. Depending on the company organization, the integration of employees via purchase requisitions or the integration of purchasing platforms with automatic management of orders and incoming invoices with EDI can also be configured.

**structura** offers you the following features:

- Management of suppliers and supplier prices.
- Updating of the purchase prices, formation of average and variable prices upon receipt of goods
- Price development of purchase prices
- Inquiry system with selection of the graduated price and direct creation of an order from the inquiry
- Orders, order monitoring, delivery date confirmation from the supplier
- Goods receipt with incoming inspection
- Invoice control and interface to the financial accounting system
- Any number of contact persons, delivery addresses and bank details of the suppliers

The screenshot displays the 'Bestell-Kopf' (Order Header) and 'Bestell-Position' (Order Position) tabs. The 'Bestell-Position' tab is active, showing a list of order positions with columns for Pos., Artikelnummer, Artikel, Bezeichnung, Artikel-Gruppe, Status, Kostenstelle, Einheiten, EK-Pos/Preis/Ext., EK-Pos/Preis/Int., and Beste. The table lists 8 positions, all with status 'erledigt' (completed). Below the main table, there is a section for 'Übersicht der Materialzugänge zur Bestellposition' (Overview of material arrivals for the order position), which shows a table with columns for Zugangsnummer, Bestellnummer, Best.-pos., Zugangsdatum, Lieferant, Lieferdatum, Menge, Zugang zum Lager, Rechnungsart., Rech.-Pos., and Rechner.

Pos.	Artikelnummer	Artikel	Bezeichnung	Artikel-Gruppe	Status	Kostenstelle	Einheiten	EK-Pos/Preis/Ext.	EK-Pos/Preis/Int.	Beste
001	10061	Schieberplatte AT 200 DN	Schieberplatte AT 200 DN	Schieberbau	erledigt	2100	Stück	30,50		30,50
002	10060	Schieberplatte AT 100 DN	Schieberplatte AT 100 DN	Schieberbau	erledigt	2100	Stück	14,46		14,46
003	10163	Schieberplatte AT 200 DN	Schieberplatte AT 200 DN	Schieberbau	erledigt	2100	Stück	16,55		16,55
004	10168	Schieberplatte AT 200 DN	Schieberplatte AT 200 DN	Schieberbau	erledigt	2100	Stück	117,76		117,76
005	10150	Schieberplatte AT 200 DN	Schieberplatte AT 200 DN	Schieberbau	erledigt	2100	Stück	119,24		119,24
006	10095	Schieberplatte AT 300 DN	Schieberplatte AT 300 DN	Schieberbau	erledigt	2100	Stück	176,40		176,40
007	10147	Schieberplatte AT 200 DN	Schieberplatte AT 200 DN	Schieberbau	erledigt	2100	Stück	126,39		126,39
008	10437	Schieberplatte AT 200 DN	Schieberplatte AT 200 DN	Schieberbau	erledigt	2100	Stück	152,31		152,31

Procurement is the link between sales and production, ideally with a fully automatic material resource planning run (MRP run).

All information from requirements and available, stored quantities come together here.

**structura** offers you the following features:

- Management of requirements from production orders
- Planned orders to illustrate purchase requirements; can be grouped according to order lot sizes
- Dynamic storage location management
- Inventory processing (annual and monthly inventory). Inventory valuation at cost of manufacture or average prices
- Retrograde consumption postings based on the manufactured and confirmed parts
- Master data such as disposition types, storage locations, supplier assignment, safety stocks, minimum stocks
- Information on all material movements, inquiries, orders available directly on the item

## MRP and material management

Integrated, accessible, efficient

### Material management

- ✓ Inventory management with receipts and issues; automatic, retrograde withdrawals
- ✓ Dynamic storage location management
- ✓ Incoming and expense accounts, sliding prices

### Material resource planning (MRP)

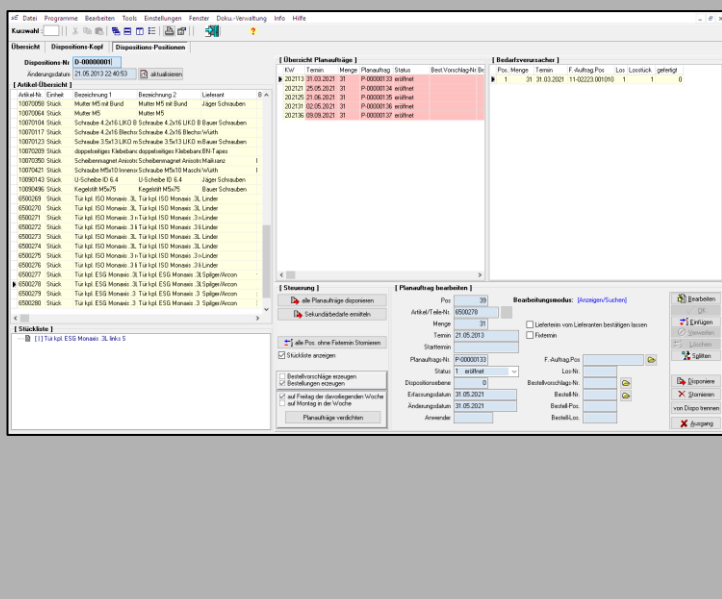
- ✓ BOM explosion
- ✓ Demand and warehouse-controlled disposition
- ✓ Requirements from customer and production orders
- ✓ Consideration of procurement times
- ✓ Creation of order proposals or direct orders
- ✓ Appointment confirmation from suppliers before order confirmation to customers

### Stock taking

- ✓ Inventory stock
- ✓ Workshop inventory
- ✓ External warehouse and consignment warehouse

### Reporting possibilities

- ✓ Material movements
- ✓ Material inventory overviews
- ✓ Delivery dates
- ✓ Cost developments
- ✓ and more



# Quality management

Integrated, safe, evaluable

## Master data

- ✓ Material properties
- ✓ Gauge management

## Quality planning

- ✓ Test instructions and test plans
- ✓ to materials
- ✓ to articles
- ✓ to production orders

## Test data

- ✓ mechanical values
- ✓ Reject with error type and error cause

## Works certificates

- ✓ All common types of works certificates
- ✓ Processed by periods
- ✓ To the order or to the piece number
- ✓ Transfer of data to EXCEL
- ✓ Addition of non-destructive testing

## Complaint management

- ✓ External complaint management
- ✓ Measures to resolve the complaint
- ✓ 8D reports
- ✓ Blocking of operations on the parts master

## Reporting possibilities

- ✓ Correlation analyses
- ✓ Frequency analysis and research
- ✓ Scrap analyses
- ✓ Test certificate history
- ✓ Graphical representation of the series of measurements
- ✓ Evaluation according to the cumulative frequency method

Quality management provides the user with tools with which he can analyse, control, monitor and document the quality of his products. Quality control begins with product planning and ends with the works certificate and the analysis of the test results. From this, new measures are derived.

Precise work planning is the basic requirement for quality control.

The features:

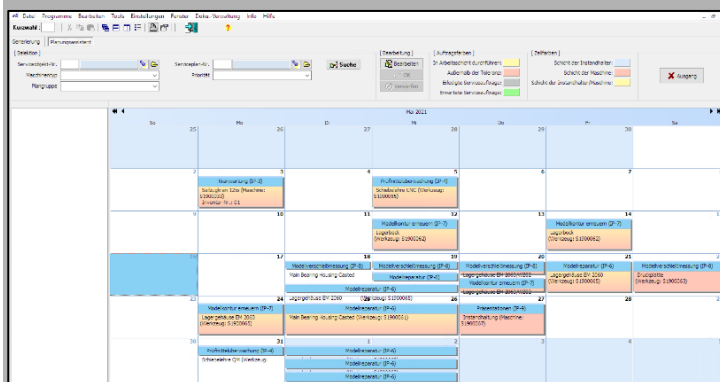
- Free value parameters and detailed work instructions can be assigned to the inspection operations. Inspection operations are combined into inspection plans. Inspection plans can be managed depending on the material or part
- Rejects are managed with the location of the origin and the type of error. The same applies to rework and overtime. This means that these processes can also be evaluated with the costs.

The screenshot displays the '8D Report' software interface. The top menu bar includes 'Datei', 'Programme', 'Bearbeiten', 'Tools', 'Einstellungen', 'Fenster', 'Doku-Verwaltung', 'Info', and 'Hilfe'. The main window is titled '8D Report' and contains several sections:

- Report Status:** Includes fields for 'Report Status' (TD, TD), 'Letzte Änderung' (15.11.2021), and 'durch' (demo).
- Reklamationsdaten:** Contains 'Reklamations-Nr.' (11-02542), 'Status' (in Bearbeitung), 'Fehler-Nr.' (1194), 'Fehler' (Flecken), 'Kunden-Nr.' (R-0100), 'Hersteller' (RGU Expert GmbH), and 'Beschädigt' (Nein).
- Teile- und Versionsinformationen:** Includes 'Teilenummer' (13-3492), 'Materialnummer' (13-0262), 'Herstellernummer' (10), 'Kunststoff' (1), and 'Verfärbung' (001).
- 8D Daten:** A list of 10 steps for the 8D process, each with a date, status, and action buttons (e.g., 'Eingabe', 'Zurück', 'Löschen').
- 8D REPORT:** A section for the final report, including a 'Geändert an:' field and a 'Von Kunden Anmerkungen' field.

Unwanted and avoidable machine failures cost production time and money. With **structura**, all machines such as cranes, transport vehicles or processing tools can be checked periodically, thus minimizing the risk of failure. **structura** reminds you.

- Periodic reminders of pending maintenance tasks (preventive maintenance)
- Measuring equipment management with annual measuring equipment monitoring
- Compliance with annual inspection of electrical equipment
- Tree structure for machines and components
- Individual maintenance plans, counters and meter readings for machines and tools
- Shift capacities for machines and maintenance crew
- Graphical planning tool for automatic and manual planning and scheduling
- Connection to the document database
- Production statistics to compare target and actual times



## Maintenance management

Preventive, comprehensive, simple

### Preventive maintenance

- ✓ Reminder of pending maintenance tasks
- ✓ Based on time intervals or consumption
- ✓ For all machines and systems

### Structure detail

- ✓ All machines can be displayed in detail in a tree structure
- ✓ Different intervals for different components
- ✓ Individual maintenance plans for individual components

### Plan your maintenance tasks

- ✓ Individual maintenance plans
- ✓ Ad-hoc maintenance plans for immediate action in case of machine failure
- ✓ Shift working times for machines and maintenance staff
- ✓ Graphic order planning

### Feedback data

- ✓ Feedback data for time used and employees involved
- ✓ Feedback data on consumables
- ✓ Correction of counter values

### Maintenance documents

- ✓ Document database access for machines and individual components
- ✓ Technical drawings, exploded views, pictures etc.

### Reporting possibilities

- ✓ Creation of individual reports with the **Report Designer**
- ✓ Materials used
- ✓ Comparison of target and actual times
- ✓ Proof of testability of measuring equipment

## Production data capturing

Detailed, precise, quick and secure

### Different types of production feedback

- ✓ Feedback via barcode, entry of part numbers or tool combinations
- ✓ Worklist for paperless notifications
- ✓ Feedback dialogs are designed for efficient operation
- ✓ Use of industrial PCs with touch functions recommended
- ✓ Machine data connection with runtime determination

### Production data

- ✓ Production performance with execution time
- ✓ Overhead times
- ✓ Overtime and rework notification

### Reject management

- ✓ Error type with possible cause
- ✓ Scrap notifications are automatically calculated at manufacturing costs

### External processing

- ✓ Inward/outward transfer to/from the external processor by means of delivery note generation on the touch PC

### Reporting possibilities

- ✓ Equipment usage
- ✓ Material consumption
- ✓ Committee reports
- ✓ Post calculation
- ✓ Production statistics
- ✓ Workplace Statistics/Performance Levels

Anmelden	Arbeitsplatz	Arbeitsplatz	Arbeitsplatz
Rüsten	ArburgH570	Rückmeldung	
Spritzmeldung	Arburg320X	Ausschuss	
Versand		Dokumente	
		Arbeitsvorrat	
		Störung	
		Mehrarbeit	
Verwerfen	Rückmeldung	ArburgH570	Arburg320X
			Ausgang

The recording of performance and material consumption can be regulated in **structura** according to the requirements of the company. The spectrum of recording options ranges from dialog input at the workplace to machine connection in production. This means that your employees can be involved and all feedback can be recorded promptly and distributed across your production areas.

The recording takes place on the production order or on an individual part number with assignment to the operation and machine.

Feedback serves to:

- Registration of the production progress,
- Registration of rejects, malfunctions, overtime,
- Relief of capacities,
- Stock posting across the production steps with different inventory valuation,
- Post-calculation management
- Determination the incentive wage

### Material consumption

The "retrograde withdrawal" function supports materials management by automatically posting the withdrawal of stored consumables in the system. It is freely configurable which materials are to be withdrawn retrospectively.

### Reject management

A prerequisite for a meaningful inventory management is the recording of rejects. This reduces the production warehouse and the order quantity in the item account for material resources.

### Work in Progress (WIP)

You are always informed about the production status of the orders. For each operation and machine, the amount already done, the work still outstanding and the date of the last confirmation are displayed.

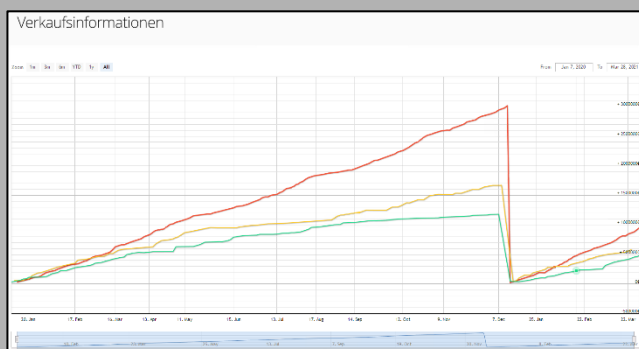


With our own report tools **Cube Designer / Report Designer**, fast and detailed data analyzes and free report design are possible.

Well-founded data evaluations enable well-founded and timely business decisions to be made and competitive advantages to be secured.

- Free access to data
- Simple operation via drag & drop
- Ideal for large amounts of data
- Multi-level analysis
- Visual design of the reports
- High degree of automation
- Portable; ideal for customer presentations

The dashboard provides you with ideal support with ready-made evaluations for an efficient overview of daily events.



## Management information system MIS

Tools for data analysis and reporting.  
Ideal for management and controlling.

### Data preparations

- ✓ Connection to any SQL-capable database possible
- ✓ Reuse of custom selections
- ✓ Visual operation without programming knowledge
- ✓ Ideal for large amounts of data

### Data analysis

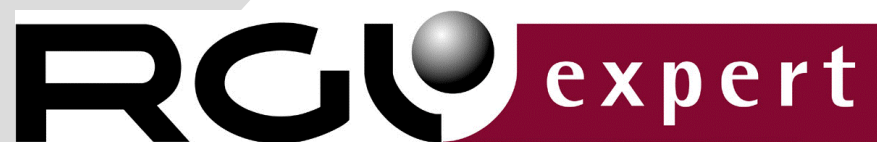
- ✓ Fast and detailed analysis of the data in the cube
- ✓ Interactive operation by drag & drop
- ✓ Storage of any views of the data (schemes)
- ✓ Drill down across multiple levels
- ✓ Definition of free calculation fields with aggregation functions
- ✓ Use of saved views for the end user

### Data output

- ✓ Fast display in data grid (crosstab)
- ✓ Display as a chart (various chart types) possible
- ✓ Output as designed report with table and chart
- ✓ Ideal for uniform reporting in the company
- ✓ Built-in PDF/EXCEL/WORD/BMP/JPG export
- ✓ Email delivery

### Dashboard

- ✓ Ready-made, standardized evaluations
- ✓ Ideal for a daily overview of all processes
- ✓ Available online in the company's own network, browser-based
- ✓ Graphic evaluations facilitate the data overview



**RGU Expert GmbH**  
**Schweinfurter Str. 28**  
**97076 Würzburg**  
**Germany**

**Tel.: +49 931 309800**

**[info@rguexpert.de](mailto:info@rguexpert.de)**  
**[www.rguexpert.de](http://www.rguexpert.de)**

